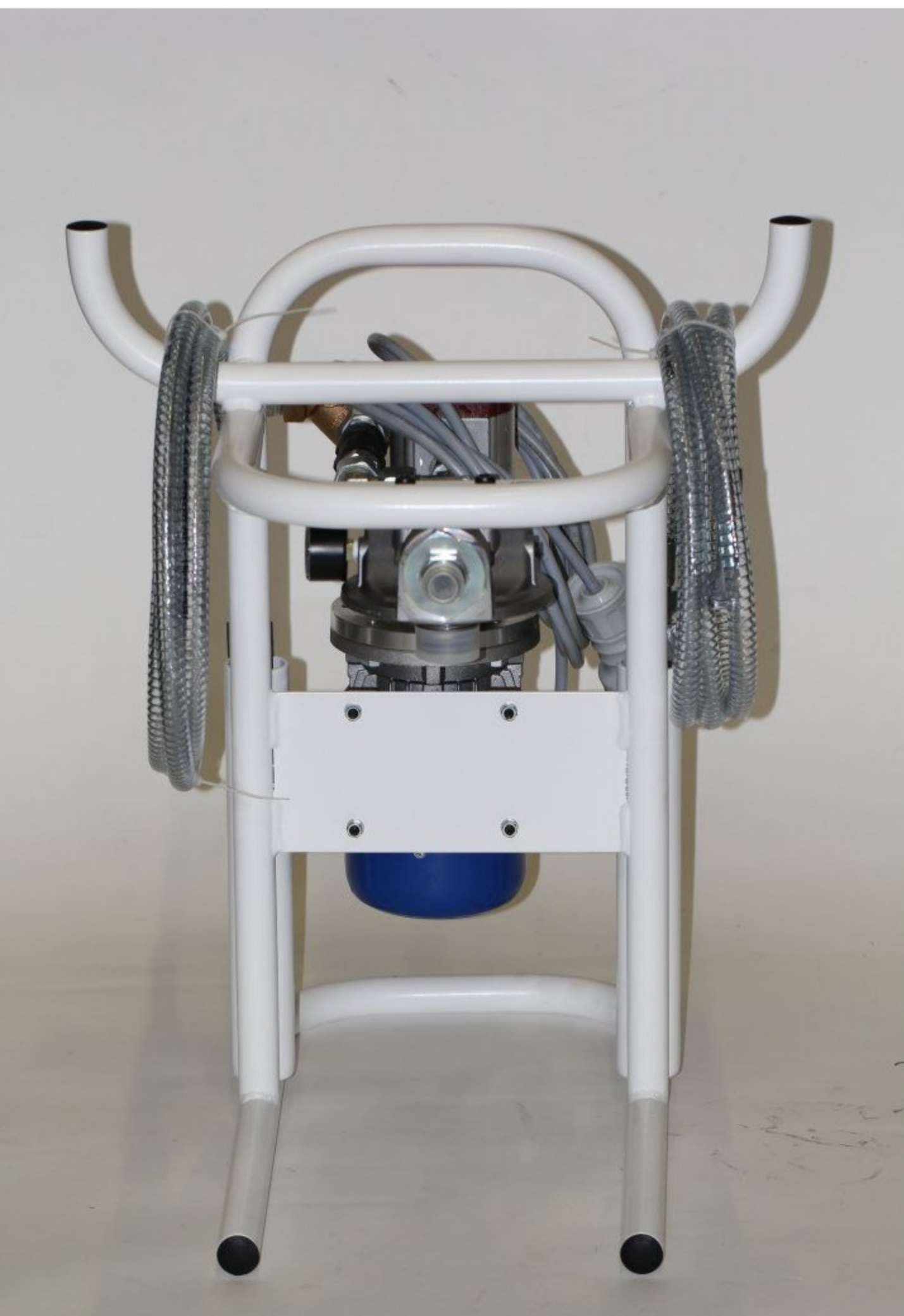


**FU00204M015B01**





**FU00304M015B01**







## TECHNICAL INFORMATION

### FRAME

SUPPORT FRAME AND FILTER HOUSING:	Carbon steel, painted, filter housing by aluminium
SINGLE PHASE ELECTRIC MOTOR:	0,18 kW, 4 poles, 230V 50 Hz
PUMP PROTECTION:	Y type filter, 500 $\mu$ m.
OVERALL DIMENSIONS (LxPxH):	480 x 520 x 620 mm
WEIGHT:	kg 23,5 approx for FU0020 kg 25 approx for FU0030

### ELEMENT

tested according to ISO 2941, 2942, 2943, 3968, 16889, 23181

**!** A filter element must be fitted in the filter housing before start: See page 3.

OPERATING TEMPERATURE RANGE:	0°C +80°C
FLUID COMPATIBILITY:	Full with HH-HL-HM-HV (acc. To ISO 2943). For use with other fluid please contact Filtrec Customer Service (info@filtrec.it).  Viscosity: from 30 cSt to 150 cSt For use with other fluids please contact the FILTREC Customer Service (info@filtrec.it)

The unit is supplied complete with a Use and Maintenance Manual and it can be used only by authorized operators, that have read and understood completely the Manual.

ORDERING INFORMATION

1.	2.	3.	4.	5.	6.	7.
FU	0030	4	M	015	B	01

1. FILTER SERIES	FU	
2. MODEL	0020	fits 1x A12xxx filter element
	0030	fits 1x DMD0030xxxx filter element
3. ELECTRIC MOTOR	4	4 poles electric motor
4. ELECTRIC MOTOR	M	single phase electric motor
5. FLOW RATE	015	flow rate 15 l/min
6. SEALS	B	NBR
7. VERSION	01	STD version

FILTER ELEMENTS

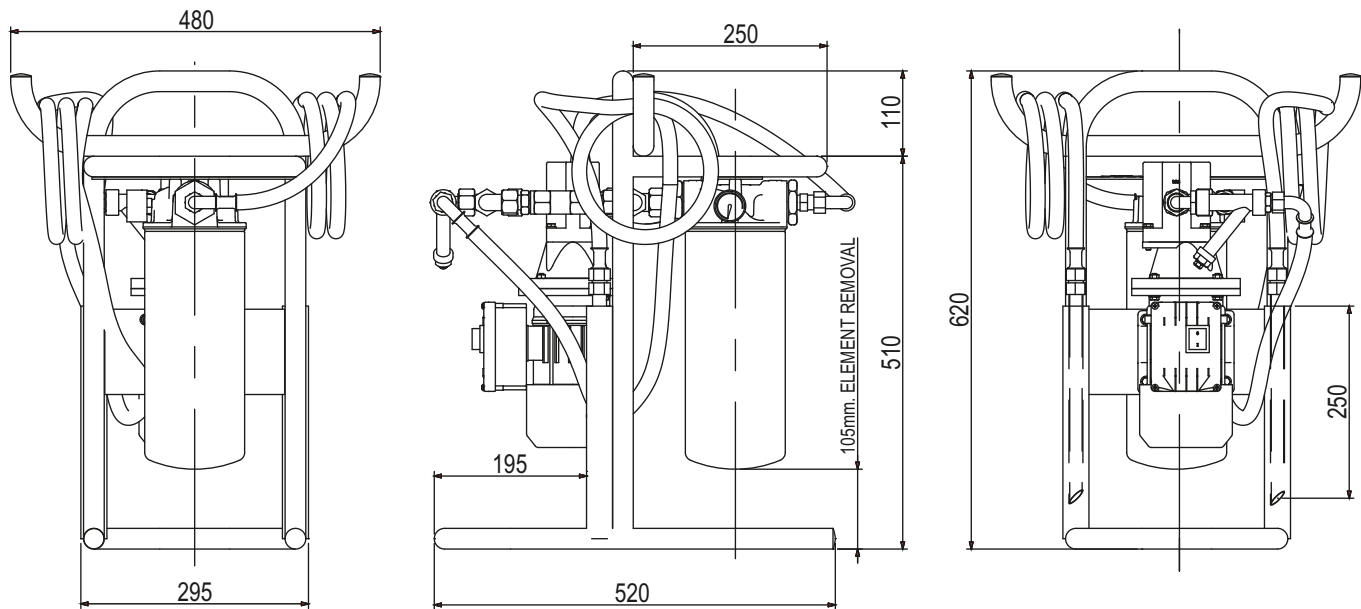
- The filter element must be replaced when:
- 1. the oil transfer is completed (if used as oil transfer unit).
  - 2. the target cleanliness class is reached (when used as off line filtration unit); (more filter elements could be necessary to reach it, depending on the oil volume to be cleaned and from the initial contamination level).
  - 3. the clogging indicator shows.
  - 4. a different filter media is required. We recommend a fine filtration; filter elements for water removal available when needed. Here below a list of the suggested filter elements:

FILTER ELEMENT	FITS	FILTRATION
A121G03	FU0020	glassfiber $\beta_{4,5 \mu m (c)} \geq 1000$
A121G10	FU0020	glassfiber $\beta_{12 \mu m (c)} \geq 1000$
A121GW10	FU0020	glassfiber $\beta_{12 \mu m (c)} \geq 1000$ +water absorber
DMD0030G03B	FU0030	glassfiber $\beta_{4,5 \mu m (c)} \geq 1000$
DMD0030G10B	FU0030	glassfiber $\beta_{12 \mu m (c)} \geq 1000$
DMD0030GW10B	FU0030	glassfiber $\beta_{12 \mu m (c)} \geq 1000$ +water absorber

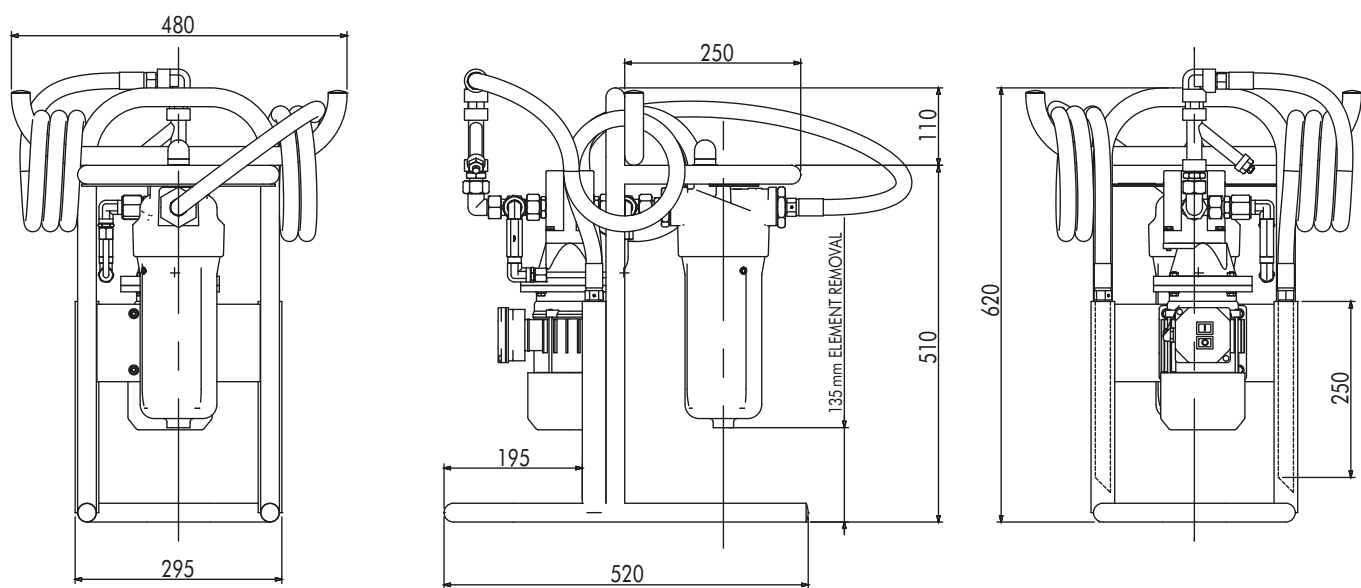
For the full range of filter elements available, please refer to the respective catalogue:  
FA1 series, size 20 and 21 for FU0020  
F040 series, size DMD0030 for FU0030.

OVERALL DIMENSIONS

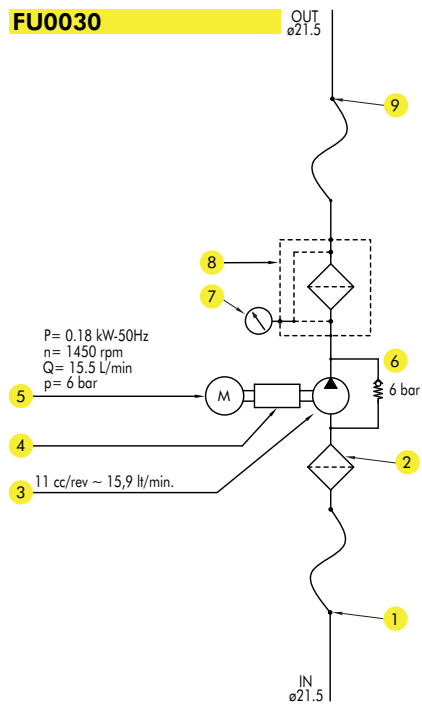
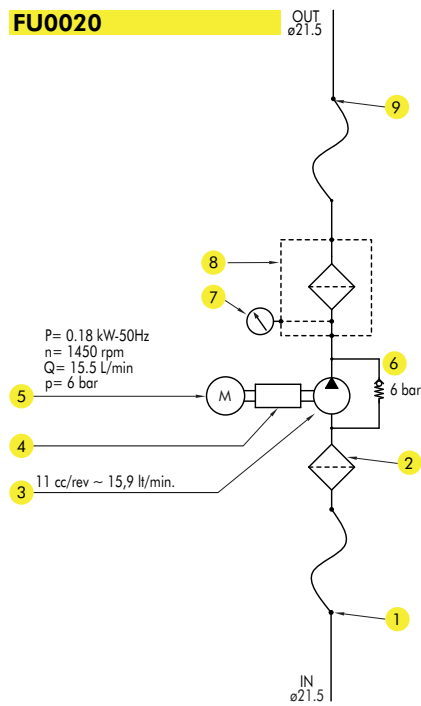
FU0020



FU0030



HYDRAULIC SCHEME



COMPONENT LIST

ITEM	DESCRIPTION
1	Flexible hose l = 3 m with rigid end
2	Suction filter "Y" type
3	Gear pump 15 l/min.
4	Motor-pump coupling arrangement
5	Single phase leelectric motor 0,18 kw with start/stop button
6	Safety relief valve
7	Clogging indicator
8	Filter housing
9	Flexible hose l = 3 m with rigid end

ELECTRIC DIAGRAM

